

# User Manual Of

Reserved Trip Simulation Using VR Technology

LGBM



Forum 8 & LGBM

CWPC2022

# **1 Introduction**

---

**W**elcome to our trip simulation reserved software, based on the Forum 8 software UC/Win-Road for virtual reality technology, you will have an unprecedented travel experience. All of this is based on the Wardrop principle of traffic planning. Before you choose to travel, you will submit the information to the system, and the system will automatically identify the path suitable for you in the road network and make the best choice, so as to ensure the comfort of travel and reduce your travel cost (including time and money).

## 2 Quick start

---

Through the introduction of the first chapter, readers have a simple understanding of the basic content of our software. This chapter will enable readers to use the functions that the software can achieve and understand the important properties of the software through real operation exercises.

### 2.1 Create Your Itinerary

---

As shown in the Figure 1 below, when you enter our program, a corresponding window will pop up for your trip input module. On this interface, you will need to input the starting point, end point and departure time respectively. After completion, click the "Save" button to submit.

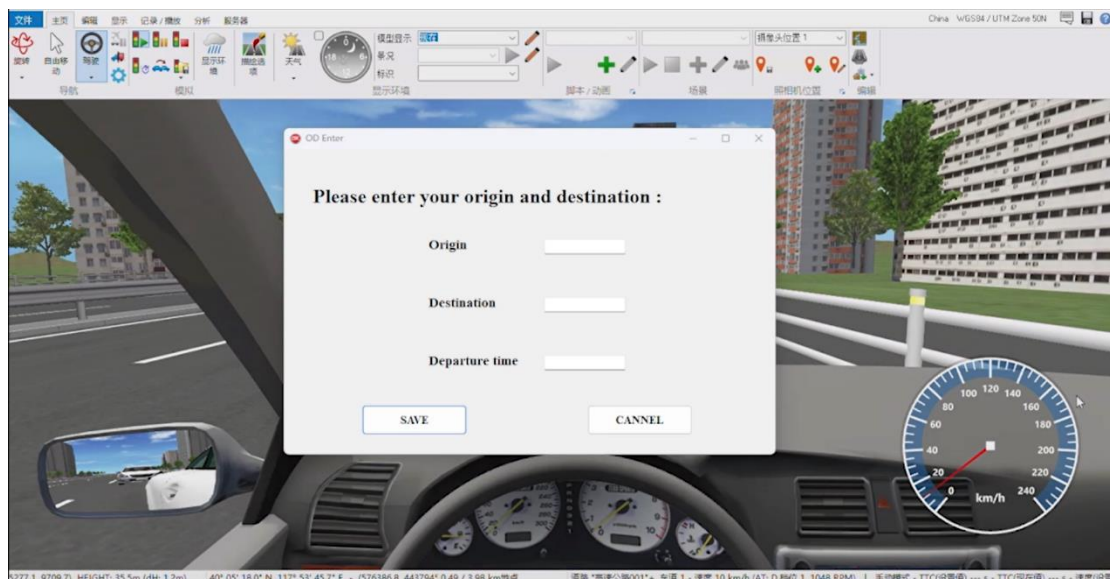


Figure 1. Enter your origin and destination

## **2.2 Your Reservation Ranking Result**

In this part, you will get a new result based on the operation content just described, which is about the itinerary information you submitted. After that, we will feedback an important reservation ranking result to you. Please know your current order, which will directly affect our system's judgment on your travel path planning. It is worth mentioning that some routes may be adjusted for you on a first-come, first-served basis, which is not the best solution for you in the case of a smooth road network, but the best solution you can get when the route is already congested.

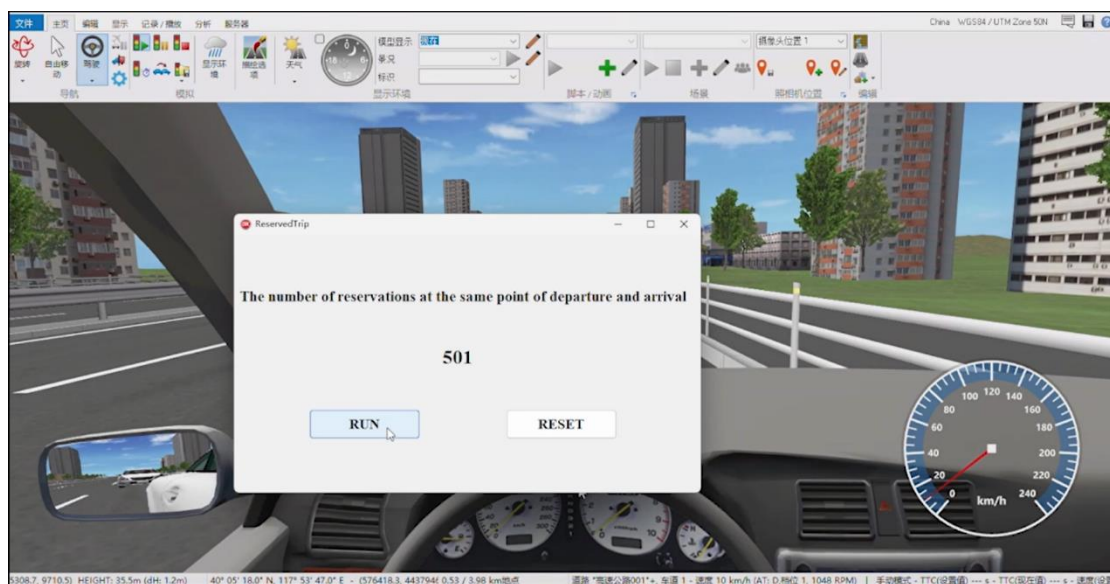


Figure 2. Reservation ranking result

## **2.3 The Recommended Path for You**

The interface that is currently displayed is the information that is very important to you. This is the itinerary provided by this program and the real-time traffic data of the current road network. You will drive on the

route provided by the scheme without any objection. Wish you a pleasant journey!

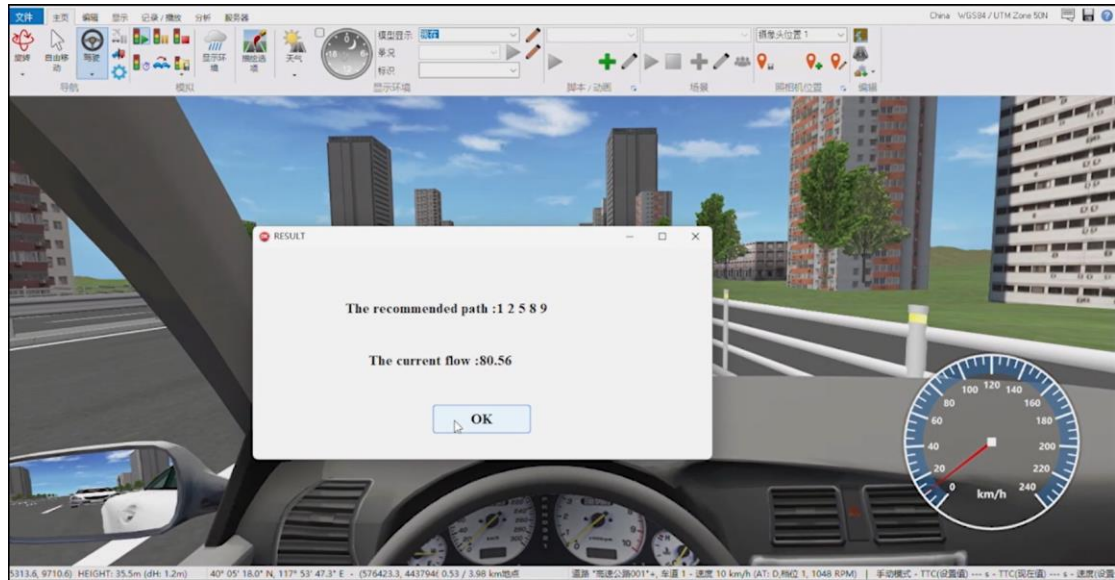


Figure 3. The Recommended Path

### **3 Comments and Suggestions**

---

If you find any mistakes or errors in the process of use, we hope to get your understanding, and look forward to your feedback to our email: LGBT-CPWC2022@gmail.com, so that we can correct when updating, and provide you with better service. The team LGBT is looking forward to your comments and suggestions.